



CABINET SPECIFICATIONS

All cabinets manufactured in Italy

- 3/4" premium grade melamine particleboard
- 1/8" melamine back panel
- 3/4" nailer rails
- Light grey pressure laminate with smooth texture
- Recessed 3/4" laminate toe kicks
- 3/4" adjustable shelves (particle board) - 2 in uppers (except microwave and fridge cabinets), 1 in base cabinets (except sink base) and 5 in vanity linens and pantries.
- Integrated shelf supports
- Slim side soft close metal drawer boxes with 5/8" thick particle board bottoms (spec below)
- Matching screw cap covers for exposed screws
- Installed with hanging rail system
- Integrated pony wall system (Optional upgrade with wrapped peninsulas and islands)
- Fillers installed flush with door/drawer fronts
- Cover panels matching doors/drawers at exposed conditions

DOOR SPECIFICATION

LAMINATE

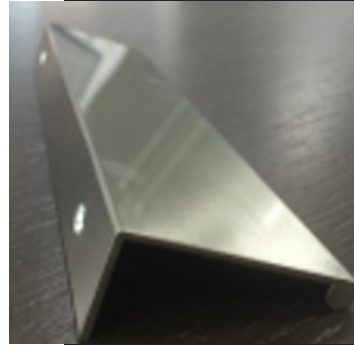
- Premium pressure laminate bonded to particle board core
- Matching PVC edge banding
- Full overlay with minimal 2mm per door reveal between doors
- 2mm micro radius on door perimeter
- Specified texture
- Unless otherwise shown, maximum door width is 24"

PAINTED

- MDF core
- Color matched face with premium lacquer finish
- Back of door with laminate
- Gloss per spec requirement
- Full overlay with minimal 2mm per door reveal between doors
- Unless otherwise shown, maximum door width is 24"
- Lacquered finish door spec

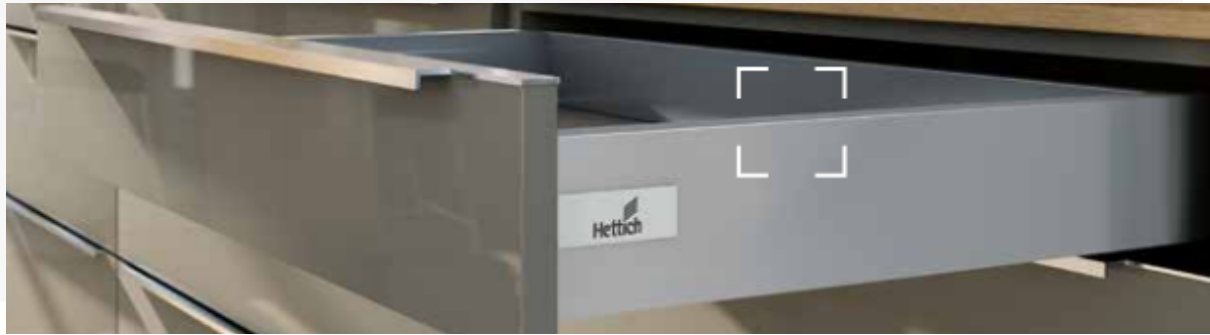
STANDARD HANDLE

Type:	Modern Tab Pull
Finish:	TBD
Material:	Aluminum
Length:	6"
Height:	¾"
Depth:	1.75"
Thickness:	1/16"



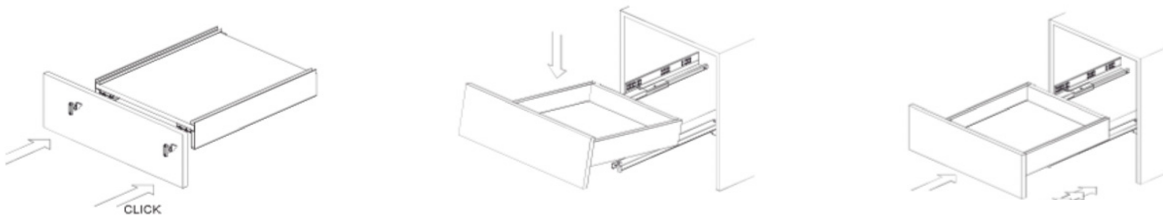
HARDWARE

Slides-Hettich Quadro V6 Silent System



- Full extension, under mount with quick release clip
- 30KG load rating
- Soft Closing
- Up/Down adjustable
- Grey slim metal sides
- Quick release drawer front

INSTALATION DIAGRAM



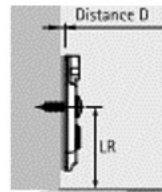
HINGE-HETTICH SENSYS 86451



- Concealed clip on hinge with integrated Silent System
- Quality classification under EN 15570, Level 3
- For door thickness of 15 - 24mm
- Cup diameter 35mm
- Cup depth 12.8 mm
- Integrated overlay adjustment + 2mm / -2mm
- Integrated depth adjustment + 3mm / -2mm
- Height adjustment at mounting plate
- Hinge arm material: nickel plated steel
- Hinge cup material: nickel plated steel

CROSS MOUNTING PLATE WITH EXPANDING SOCKETS AND SPECIAL SCREWS

- For holes with max Ø2.5mm
- Quality classification under EN15570, Level 3
- Hole spacing 32mm
- Cam height adjustment + 2mm
- Steel, nickel plated

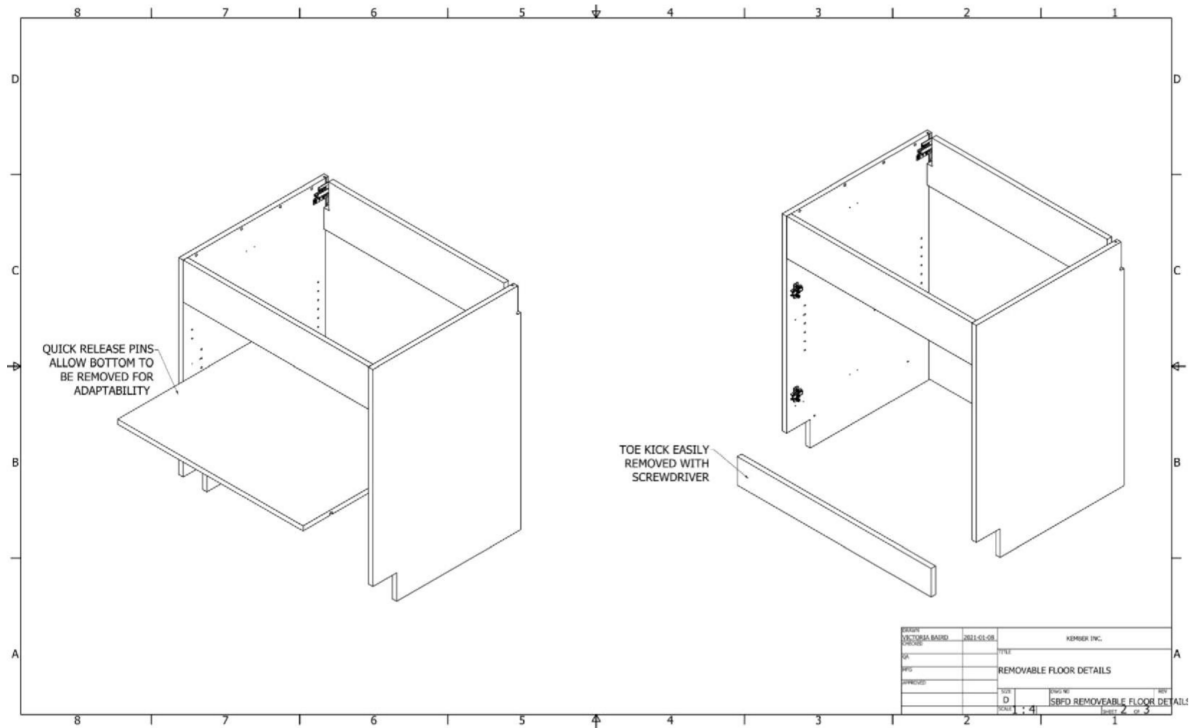
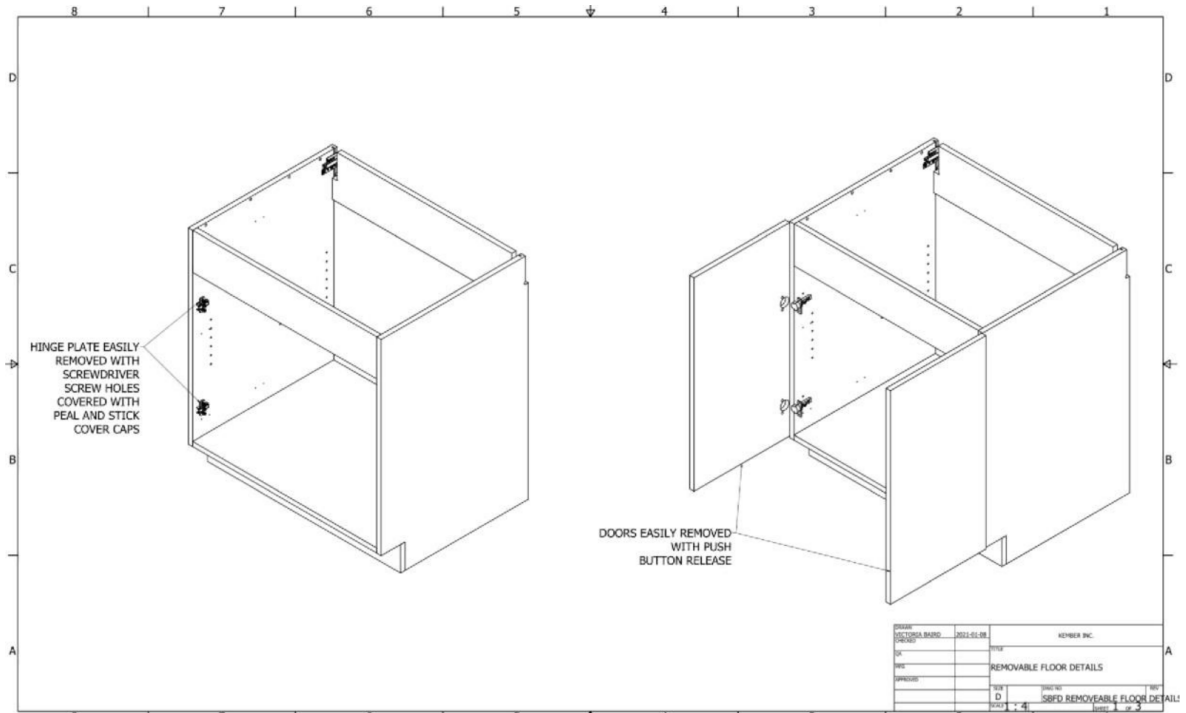


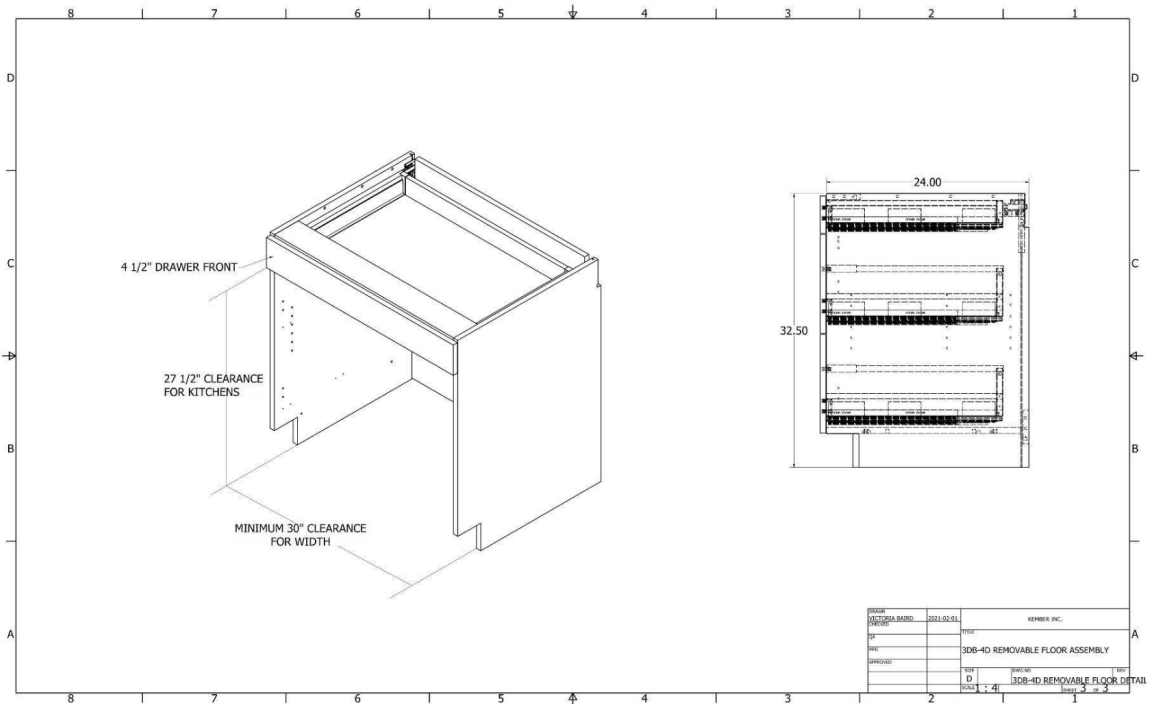
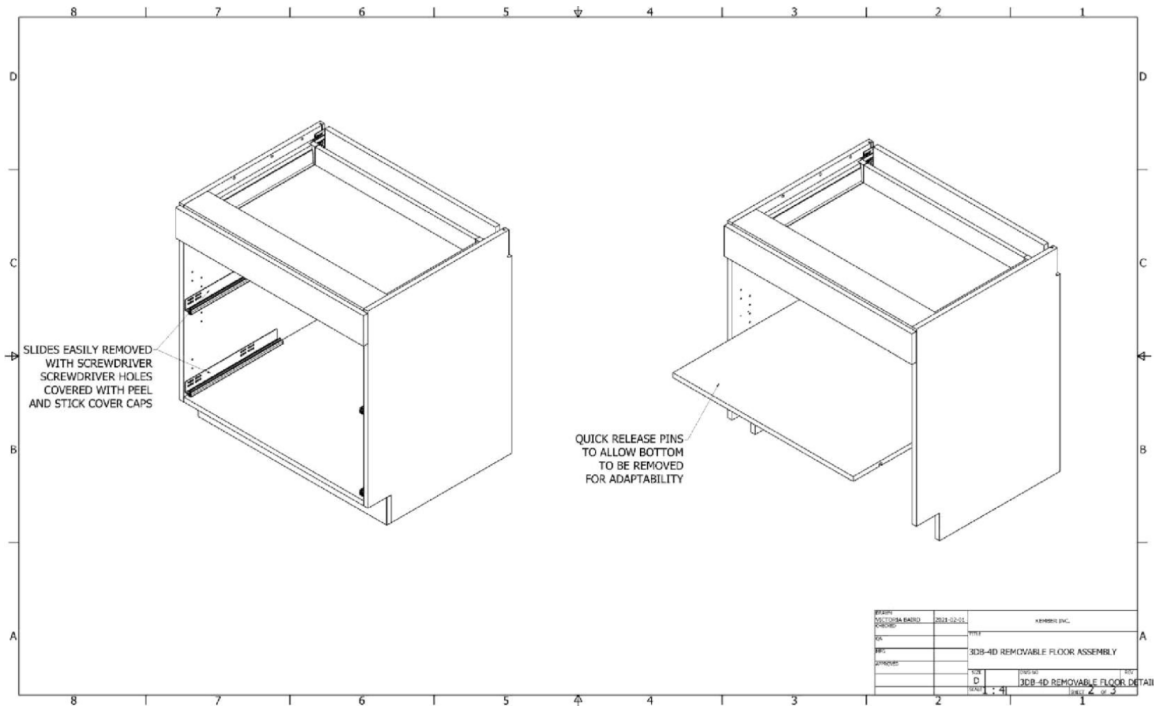
LEGS

- Height 100mm
- Heavy Duty
- Anti-microbial
- Anti-corrosion
- Durable/Strong

All materials meet or exceed TSCA standards

REMOVABLE SKIN BASE





UNDER CABINET LIGHTING

270 Profilo gola pensile led
Wall unit led gola profile

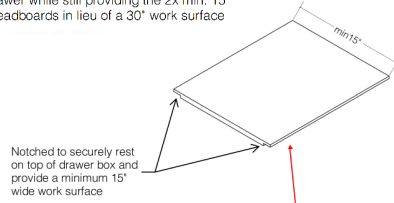
Finiture / Finishes
Per completare il codice della versione scelta sostituire "000" con il codice della finitura. Per le finiture disponibili vedi pag. 140.
To complete the code for the version chosen, replace "000" with the code of the finish. See page 140 for available finishes.

270		H mm	L mm	regolazione	pcs	m	kg	P x L x H mm	
Caratteristiche tecniche				adjustment					
Codice Code		70 270 XXX 000 000	20	6000	-	25	100	26	12 x 613 x 14

INTERNAL BREADBOARD

Breadboard detail

Breadboards are installed on top of drawer boxes (both internal and standard drawers) and are easily removed by lifting the breadboard off of the drawer, allowing for a fully functional drawer while still providing the 2x min. 15" breadboards in lieu of a 30" work surface



BUILT-IN SHELF CLIPS



HANGING RAIL SYSTEM



CABINET SELECTIONS

Construction	Species	Color	Sheen	Texture	Location
Frameless full overlay flat panel	TBD	TBD	TBD	TBD	